

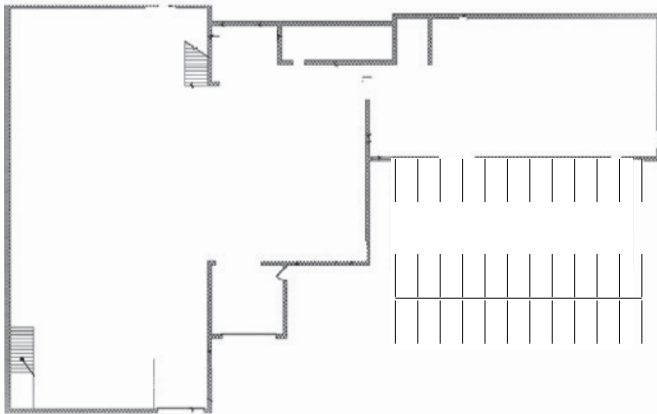
11,500 SF 120 HAMILTON AVE

AT ROUTE 129 TRENTON, NJ



MODERN RECYCLED SPACES®
A trademark of First Properties Corp, Broker

- Lots of Parking
- Near Sovereign Bank Arena
- Open Floor Plan
- Stand Alone Building
- Convenient Location Near Route 1/295/195
- On Light Rail Line and Hi-Speed Internet Highway



**For more information,
please contact:**

**Max Popkin
Sale Associate**

First Properties Corp, Broker

609-731-0378

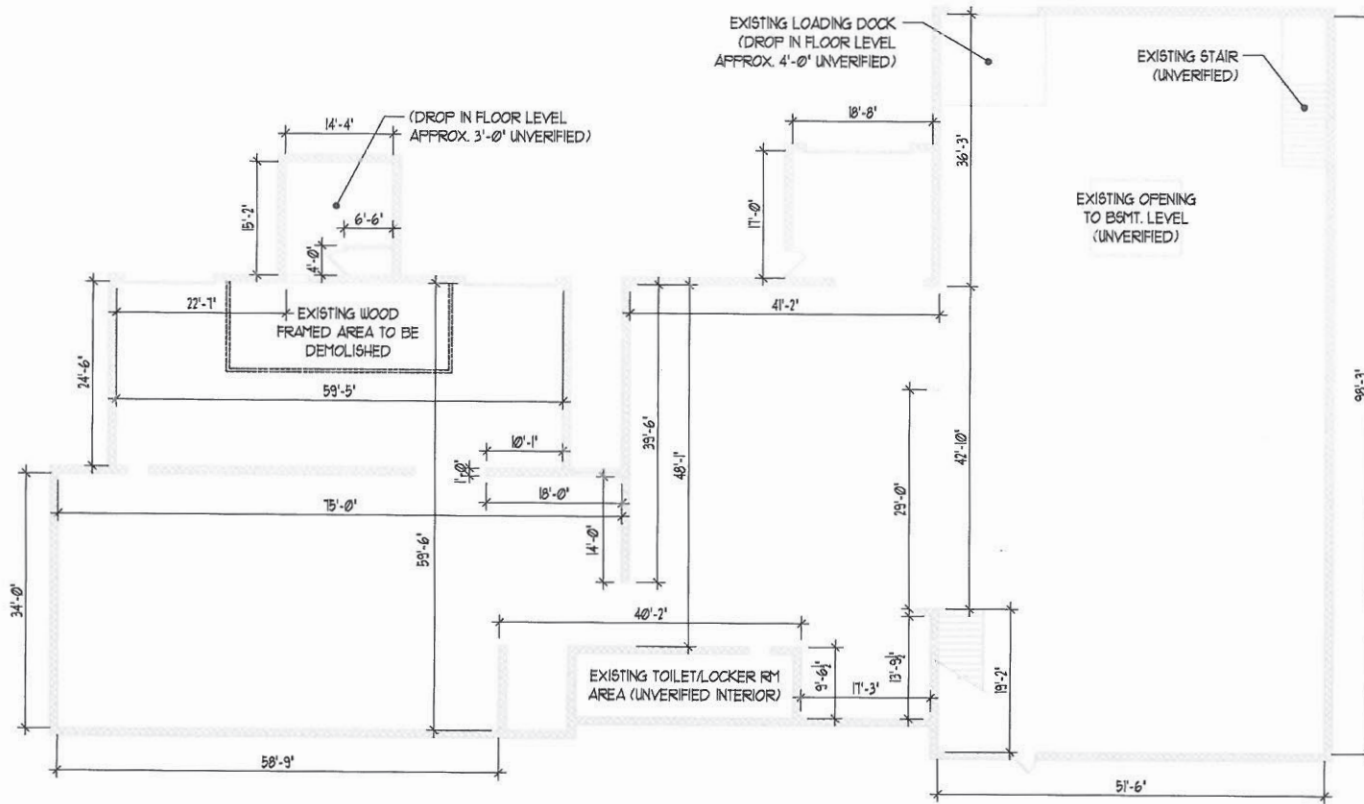
mpopkin@modernrecycledspaces.com



MODERN RECYCLED SPACES®
A trademark of First Properties Corp., Broker



ARENA 129



1 EXISTING FLOOR PLAN
Scale: 1/16"=1'-0"

Steven B. Cohen
NJ License No. 071824

Project Name / Location:
EXISTING FLOOR PLAN
FOR
120 HAMILTON AVE.
TRENTON, NJ

Architect:
Steven B. Cohen, Architect P.C.
83 Flors Avenue
Princeton, New Jersey 08542
609-532-8269
609-532-8270 Fax

Client/Engineer:
.....

Professional Engineer:
.....

Professional Engineer:
.....

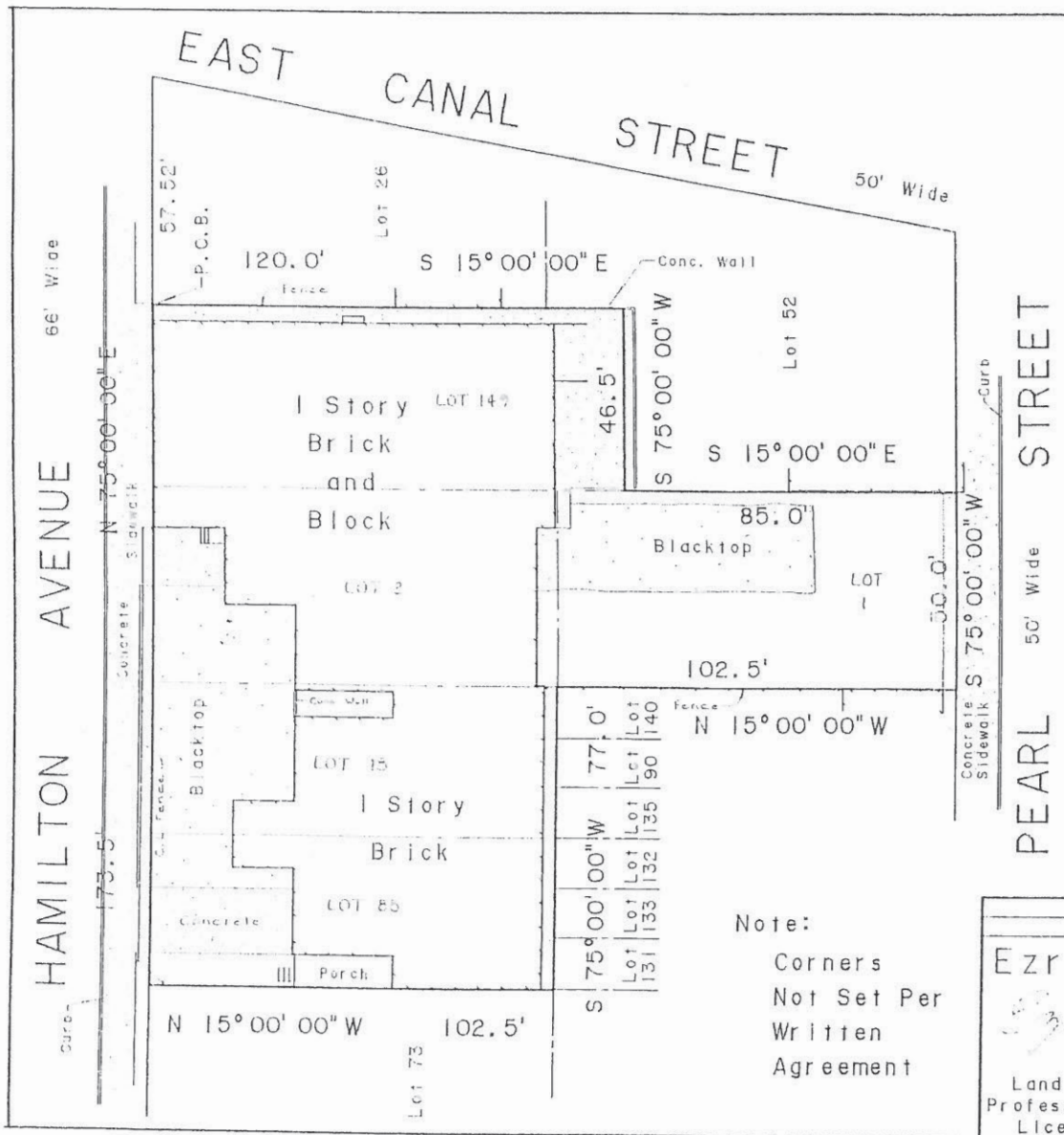
Professional Engineer:
.....

Sheet Title: **EXISTING CONDITIONS**

Issue Date: 10/05/04
Issue Number:
.....

Project Number: **A1.01**
Sheet Number: 00000

DO WHAT YOU LOVE. LOVE W[HERE] YOU DO IT.™



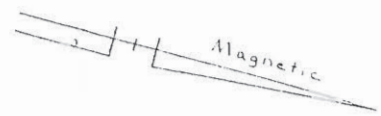
Being: Lots 1, 2, 18, 88 and 149
 Block III E, Page III
 City of Trenton tax maps



MODERN RECYCLED SPACES®
 A trademark of First Properties Corp, Broker



Lot Area: 23,722.5 Sq.Ft.



Note: Survey shows conditions as measured on the ground.

Note:
 Corners
 Not Set Per
 Written
 Agreement

Ezra Golub Land Surveyor and Professional Engineer License No. 9599		Plan of Survey 120 Hamilton Avenue City of Trenton, Mercer Co., NJ	
		Louis Lehman, P.A. 609 883-2444 Fax 883-5792 1901 N. Olden Ave., Suite 12-A, Trenton, NJ 08618	
Scale 1" = 30'	Survey Date Dec. 26, 02	Survey No. 42810-A	

DO WHAT YOU LOVE. LOVE W[HERE] YOU DO IT.™